



## Rabbit anti Caspase 10 Polyclonal Antibody

Alternative Name(s): CASP10

### Order Information

- **Description:** Caspase 10
- **Catalogue:** 500-10854
- **Lot:** See label
- **Size:** 100ug/200ul
- **Host:** Rabbit
- **Clone:** nan
- **Application:** IHC(P)
- **Reactivity:** Hu

### **ANTIGEN PREPARATION**

A synthetic peptide corresponding to C-term of human Caspase 10. This sequence is identical to mouse and rat.

### **BACKGROUND**

A unique family of cysteine proteases has been described that differs in sequence, structure and substrate specificity from any previously described protease family. This family, termed Ced-3/caspase-1, is comprised of caspase-1, caspase-2, caspase-3, caspase-4, caspase-6 and caspase-7, caspase-9, and caspase-10. Ced-3 family members function as key components of the apoptotic machinery and act to destroy specific target proteins which are critical to cellular longevity. Caspase-10 has been shown to activate caspase-3 and caspase-7 in response to apoptotic stimuli.

### **PURIFICATION**

The Rabbit IgG is purified by Epitope Affinity Purification

### **FORMULATION**

This affinity purified antibody is supplied in sterile Phosphatebuffered saline (pH7.2) containing antibody stabilizer

### **SPECIFICITY**

This antibody reacts with human Caspase-10. The other species are not tested.

### **STORAGE**

The antibodies are stable for 24 months from date of receipt when stored at  $-20^{\circ}\text{C}$  to  $-70^{\circ}\text{C}$ . The antibodies can be stored at  $2^{\circ}\text{C}$ - $8^{\circ}\text{C}$  for three month without detectable loss of activity. Avoid repeated freezing-thawing cycles.

### **APPLICATIONS/SUGGESTED WORKING DILUTIONS\***

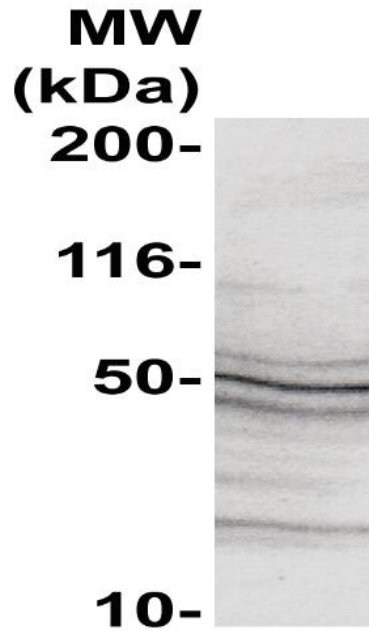
- Western Blot: 0.1-1  $\mu\text{g/ml}$
- ELISA: 0.01-0.1  $\mu\text{g/ml}$
- Immunoprecipitation: 2-5  $\mu\text{g/ml}$
- IHC: 2-10  $\mu\text{g/ml}$
- Flow cytometry: Not tested
- Molecular Weight: 51.0
- Positive Control: Kidney Tissue
- Cellular Location: Cell Membrane

\*Optimal dilutions should be determined by researchers for the specific applications.

### **FOR RESEARCH USE ONLY.**

AbboMax, Inc 2528 Qume Drive, Suite 8, San Jose, California 95131, USA  
1 408-573-1898 (Tel). 1 408-573-1858 (Fax). [www.abbomax.com](http://www.abbomax.com) [info@abbomax.com](mailto:info@abbomax.com)

**DATA ATTACHMENTS**



Western Blot: The cell lysate derived from Jurkat was immunoblotted by the Rabbit anti Caspase-10 (Cat#500-10854) @ 1:500. Multiple immunoreactive bands are observed around 59-17 kDa.

**REFERENCES**

**FOR RESEARCH USE ONLY.**